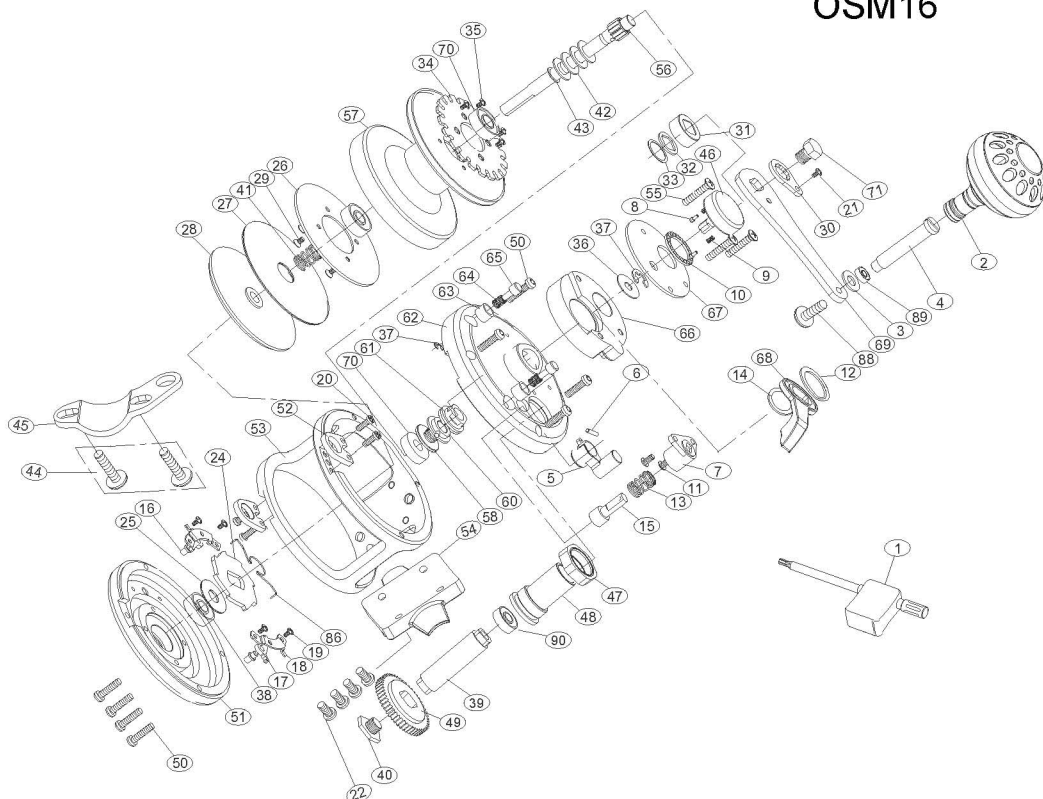




# SEAMASTER One Speed

OSM12  
OSM16



No.	PARTSNAME	No.	PARTSNAME	No.	PARTSNAME
1	Wrench	27	Drag washer	53	Frame
2	Handle knob	28	Pressure plate	54	Reel foot
3	Handle shaft coat washer	29	Spool drag screw	55	Cover screw
4	T handlenail	30	Stopping slice	56	Drive shaft
5	Alarmlever	31	Drive shield	57	Spool
6	Alarmlevercrosspinsuffort	32	Thrust washer	58	Pre-program screw
7	Alarmsupport	33	Drive shaft washer	60	Pre-program key
8	Soundnail	34	Alarm sound slice	61	Eccentric
9	Soundnailspring	35	Spool drag screw	62	Right side cover
10	Sound silce	36	Dial washer	63	Limited bushing
11	Alarm lever screw	38	Ball bearing	64	Limited spring
12	Drag control lever washer(B)	39	Drive shaft	65	Limited nail
13	Alarm spring	40	Drive shaft screw	66	Right side support plate
14	Dragcontrol lever thrust ring	41	Spool shaft spring	67	Lever hob cover
15	Alarm hammer	42	Spool spring washer	68	Drag control lever
16	Sound plate screw	43	Spool washer	69	Handle arm
17	Anti reverse dog	44	Fixed screw	70	Ball bearing
18	Stopping bracket	45	Rod clamp	71	Handle bolt
19	Stopping bracket screw	46	Drag tension knob	86	Spring for silence
20	Haness lugs screw	47	Holder nut	87	Drive shaft coat washer
21	Retainer screw	48	Drive shaft cover	88	Handle knob screw
22	Reel foot screws	49	Drive gear-high speed	89	Ball bearing
24	Anti-reverse ratchet	50	Side plate screws	90	Ball bearing
25	Washer	51	Left side plate		
26	Spool washer	52	Harness lugs		