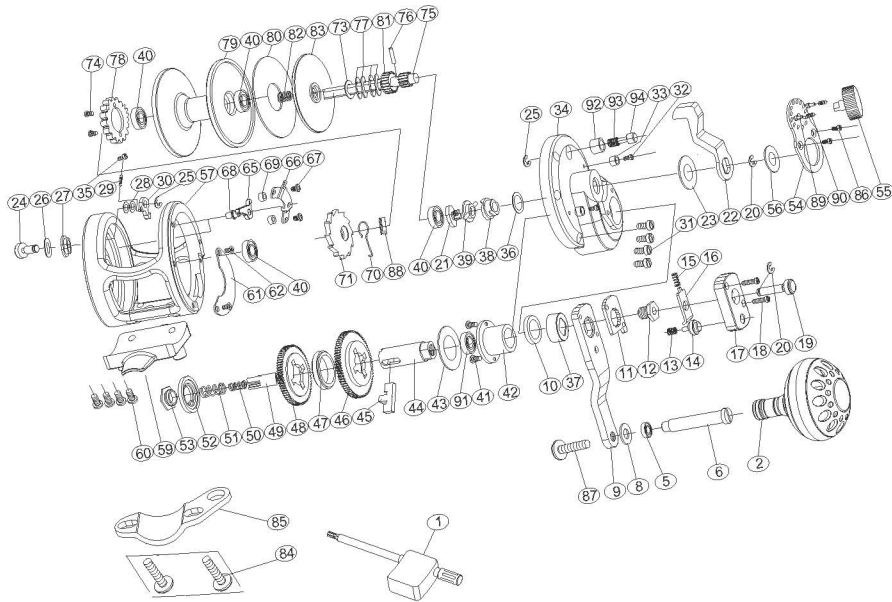




SEAMASTER Two Speed

SM08  
SM10



No.	PARTSNAME	No.	PARTSNAME	No.	PARTSNAME
1	Wrench	34	Right side plate	67	Set plate screws
2	Handle knob	35	Sound spring pin	68	Set plate nail
5	Ball bearing	36	Pre-program plate washer	69	Plate support
6	T handle nail	37	Drive shield	70	Spring for silence
8	Handle shaft coat washer	38	Pre-program plate	71	Anti-reverse ratchet
9	Handle arm	39	Pre-program key	73	Spool washer
10	Drive shaft washer	40	Ball bearing	74	Alert ratchet screws
11	Stopping slice	41	Shaft screws	75	High speed pinion gear
12	Handle bolt	42	Drive shaft coat	76	Main shaft pin
13	Speedupbuttonspring	43	Drive shaft coat washer	77	Spool spring washer
14	Speedupbutton	44	Drive shaft	78	Alert ratchet
15	Push spring	45	Gear cross bar	79	Spool
16	Push slice	46	Drive gear-high speed	80	Drag plate
17	Buttonbasement	47	Various speed washer	81	Pinion gear
18	Buttonscrew	48	Drive gear-low speed	82	Press spring
19	Pushbuttonshaft	49	Slide coat	83	Pressure plate
20	PushbuttonE washer	50	Shaft insert spring	84	Fixed screws
21	Pre-program screw	51	Drive shaft spring	85	Rod clamp
22	Dragcontrollever	52	Friction washer	86	Fixed plate screws
23	Dragcontrolleverwasher	53	Drive shaft screw	87	Handle knob screw
24	Strikealertlever	54	Lever hub cover	88	Spring cover for silence
25	StrikealertleverE washer	55	Drag tension knob	89	Sound nail
26	Alarmadjustcoatwasher	56	Drag control lever washer	90	Sound nail spring
27	Alarmadjustcoat	57	Frame	91	Ball bearing
28	Soundnailwasher	59	Reel foot	92	Limited bushing
29	Soundspring	60	Reel foot screws	93	Limited spring
30	Soundnail	61	Close cover	94	Limited nail
31	Sideplatescrews	62	Close cover screws		
32	Limitedscrew	65	Anti-reverse dog		
33	Limitedbushing	66	Set plate		