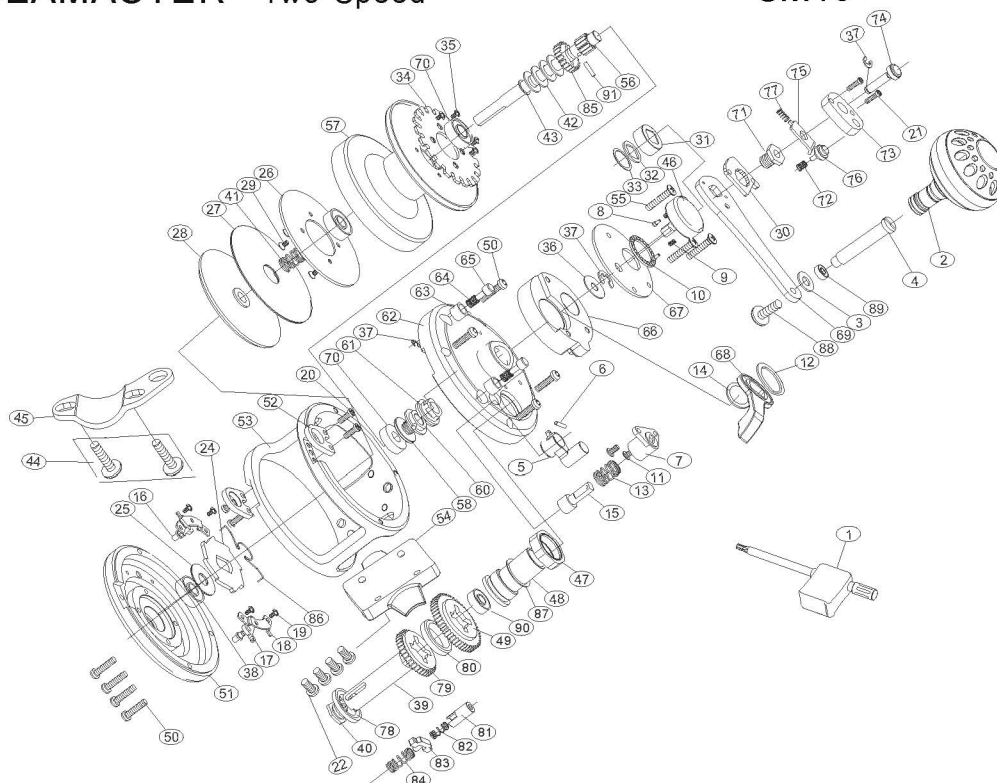


# maxel

## SEAMASTER Two Speed

### SM12

### SM16



No.	PARTSNAME	No.	PARTSNAME	No.	PARTSNAME
1	Wrench	32	Thrust washer	63	Limited bushing
2	Handle knob	33	Drive shaft washer	64	Limited spring
3	Handle shaft coat washer	34	Alarm sound slice	65	Limited nail
4	T handle nail	35	Spool drag screw	66	Right side support plate
5	Alarm lever	36	Dial washer	67	Lever hob cover
6	Alarm lever cross pin support	37	"E" washer	68	Drag control lever
7	Alarm support	38	Ball bearing	69	Handle arm
8	Sound nail	39	Drive shaft	70	Ball bearing
9	Sound nail spring	40	Drive shaft screw	71	Handle bolt
10	Sound silce	41	Spool shaft spring	72	Speedup button spring
11	Alarm lever screw	42	Spool spring washer	73	Button basement
12	Drag control lever washer(B)	43	Spool washer	74	Push button shaft
13	Alarm spring	44	Fixed screw	75	Push slice
14	Drag control lever thrust ring	45	Rod clamp	76	Speedup button
15	Alarm hammer	46	Drag tension knob	77	Push spring
16	Sound plate screw	47	Holder nut	78	Friction washer
17	Anti reverse dog	48	Drive shaft cover	79	Drive gear-low speed
18	Stopping bracket	49	Drive gear-high speed	80	Various speed washer
19	Stopping bracket screw	50	Side plate screws	81	Slide coat
20	Haness lugs screw	51	Left side plate	82	Shaft insert spring
21	Retainer screw	52	Harness lugs	83	Slide knob
22	Reel foot screws	53	Frame	84	Drive shaft spring
24	Anti-reverse ratchet	54	Reel foot	85	Pinion gear
25	Washer	55	Cover screw	86	Spring for silence
26	Spool washer	56	Drive shaft	87	Drive shaft coat washer
27	Drag washer	57	Spool	88	Handle knob screw
28	Pressure plate	58	Pre-program screw	89	Ball bearing
29	Spool drag screw	60	Pre-program key	90	Ball bearing
30	Stopping slice	61	Eccentric	91	Gear shaft pin
31	Drive shield	62	Right side cover		