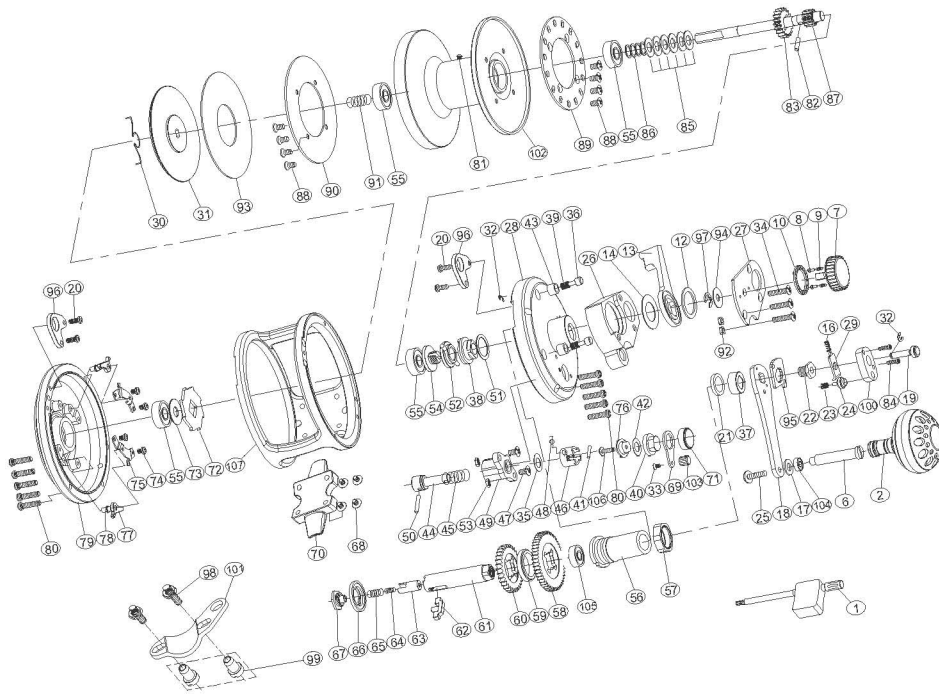


maxel

SEAMASTER Two Speed

SM20



No.	PARTSNAME	No.	PARTSNAME	No.	PARTSNAME
1	Wrench	40	Alarm lever base	74	Set plate screws
2	Handle knob	41	Alarm lever crosspin suffort	75	Set plate
6	T handle nail	42	Spacer	76	Crosspin support
7	Drag tension knob	43	Limited bushing	77	Anti-reverse dog
8	Sound nail	44	Alarm hammer	78	Set plate nail
9	Sound nail spring	45	Alarm spring	79	Left side plate
10	Sound slice	46	Alarm limited coat	80	Side plate screws
12	Drag control lever washer	47	Alarm lever screw	81	Spool nail
13	Drag control lever	48	Alarm crosspin spring	82	Gear shaft pin
14	Drag control lever ring	49	Alarm support	83	Pinion gear
16	Pushspring	50	Alarm lever crosspin suffort	84	Buttonscrew
17	Handle shaft coat washer	51	Pre-program plate washer	85	Spool spring washer
18	Handle arm	52	Pre-program key	86	Spool washer
19	Pushbuttonshaft	53	Alarm lever nut	87	High speed pinion gear
20	Harness lugs screw	54	Pre-program screw	88	Spool dragscrew
21	Drive shaft washer	55	Ball bearing	89	Alert ratchet
22	Handle bolt	56	Drive shaft coat	90	Spool washer
23	Speedup button spring	57	Holdemut	91	Spool shaft spring
24	Speedup button	58	Drive gear-high speed	92	Fixed nut
25	Handle knob screw	59	Various speed washer	93	Drag plate
26	Right side support plate	60	Drive gear-low speed	94	Dial washer
27	Lever hub cover	61	Drive shaft	95	Stopping slice
28	Right side plate	62	Gear cross bar	96	Harness lugs
29	Push slice	63	Slide coat	97	"E" washer
30	Spring for silence	64	Shaft insert spring	98	Fixed screws
31	Pressure plate	65	Drive shaft spring	99	Fixed nuts
32	Pushbutton E washer	66	Friction washer	100	Push button cover
33	Spool dragscrew	67	Drive shaft screw	101	Rod clamp
34	Fixed plate screws	68	Reel foot screws	102	Spool
35	Alarm washer	69	Alarm lever slice	103	Alarm lever knob
36	Limited nail	70	Reel foot	104	Ball bearing
37	Drive shield	71	Alarm lever cap	105	Ball bearing
38	Pre-program plate	72	Anti-reverse ratchet	106	Crosspin fixed screw
39	Limited spring	73	Washer	107	Frame