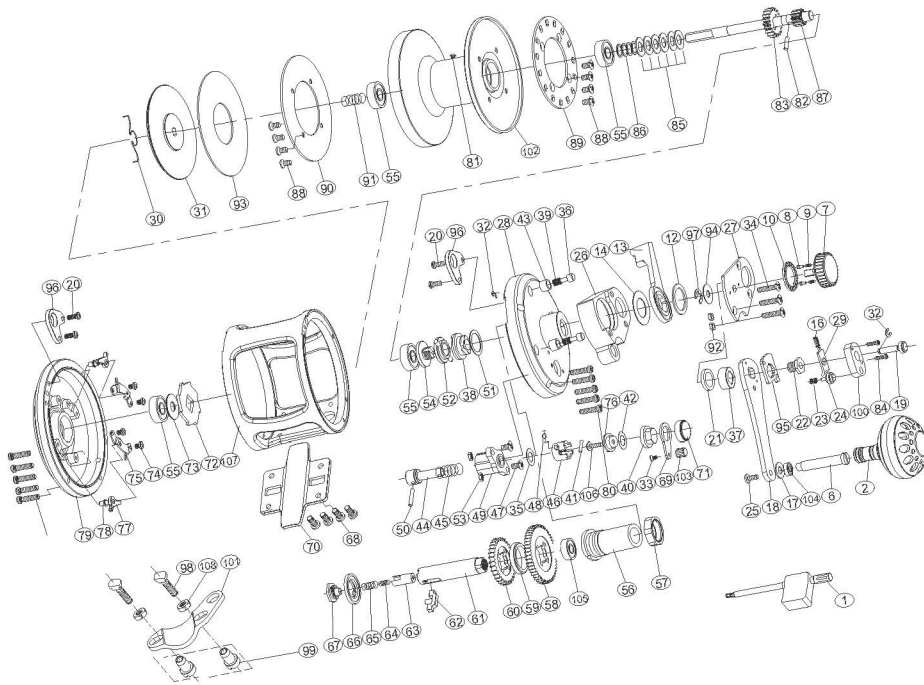


maxel

SEAMASTER Two Speed

SM30



| No. | PARTSNAME | No. | PARTSNAME | No. | PARTSNAME |
|-----|---------------------------|-----|-------------------------------|-----|------------------------|
| 1 | Wrench | 40 | Alarm leverbase | 74 | Set plate screws |
| 2 | Handle knob | 41 | Alarm lever crossspin suffort | 75 | Set plate |
| 6 | T handle nail | 42 | Spacer | 76 | Crossspin support |
| 7 | Drag tension knob | 43 | Limited bushing | 77 | Anti-reverse dog |
| 8 | Sound nail | 44 | Alarm hammer | 78 | Set plate nail |
| 9 | Sound nail spring | 45 | Alarm spring | 79 | Left side plate |
| 10 | Sound slice | 46 | Alarm limited coat | 80 | Side plate screws |
| 12 | Drag control lever washer | 47 | Alarm lever screw | 81 | Spool nail |
| 13 | Dragcontrollever | 48 | Alarm crossspin spring | 82 | Gear shaft pin |
| 14 | Drag control lever ring | 49 | Alarm support | 83 | Pinion gear |
| 16 | Pushspring | 50 | Alarm lever crossspin suffort | 84 | Buttonscrew |
| 17 | Handle shaft coat washer | 51 | Pre-program plate washer | 85 | Spool spring washer |
| 18 | Handle arm | 52 | Pre-program key | 86 | Spool washer |
| 19 | Pushbuttonshaft | 53 | Alarmlevernut | 87 | High speed pinion gear |
| 20 | Harness lugs screw | 54 | Pre-programscrew | 88 | Spooldragscrew |
| 21 | Drive shaft washer | 55 | Ball bearing | 89 | Alert ratchet |
| 22 | Handle bolt | 56 | Drive shaft coat | 90 | Spool washer |
| 23 | Speedupbuttonspring | 57 | Holdemut | 91 | Spool shaft spring |
| 24 | Speedupbutton | 58 | Drive gear-high speed | 92 | Fixednut |
| 25 | Handle knob screw | 59 | Various speed washer | 93 | Drag plate |
| 26 | Right side support plate | 60 | Drive gear-low speed | 94 | Dial washer |
| 27 | Lever hub cover | 61 | Drive shaft | 95 | Stopping slice |
| 28 | Right side plate | 62 | Gear cross bar | 96 | Harness lugs |
| 29 | Pushslice | 63 | Slide coat | 97 | "E" washer |
| 30 | Spring for silence | 64 | Shaft insert spring | 98 | Fixed screws |
| 31 | Pressure plate | 65 | Drive shaft spring | 99 | Fixed nuts |
| 32 | PushbottonE washer | 66 | Friction washer | 100 | Push button cover |
| 33 | Spooldragscrew | 67 | Drive shaft screw | 101 | Rod clamp |
| 34 | Fixed plate screws | 68 | Reel foot screws | 102 | Spool |
| 35 | Alarm washer | 69 | Alarm lever slice | 103 | Alarm lever knob |
| 36 | Limited nail | 70 | Reel foot | 104 | Ball bearing |
| 37 | Drive shield | 71 | Alarm lever cap | 105 | Ball bearing |
| 38 | Pre-program plate | 72 | Anti-reverse ratchet | 106 | Crossspin fixed screw |
| 39 | Limited spring | 73 | Washer | 107 | Frame |