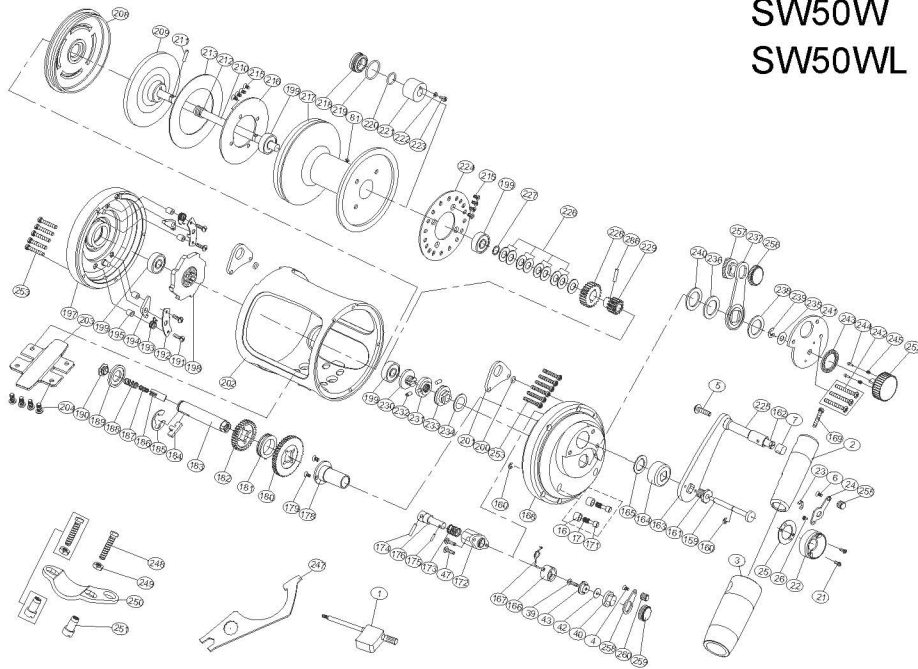




SEAWOLF Two Speed

SW50
SW50W
SW50WL



No.	PARTSNAME	No.	PARTSNAME	No.	PARTSNAME
1	Wrench A	179	Shaft screw	223	Piston screw
2	Handle knob	180	Drive gear-high speed	224	Alarm sound slice
3	Knob EVA cover	181	Various speed washer	225	Handle shaft coat
4	Push slice screw	182	Drive gear-low speed	226	Spool spring washer
5	Handle knob screw	183	Drive shaft	227	Spool washer
6	Push slice screw	184	Slide knob	228	Pinion gear
7	Handle shaft retainer	185	"E" washer	229	High speed pinion gear
16	Limited bushing	186	Slide coat	230	Pre-program screw
17	Limited spring	187	Shaft insert spring	231	Pre-program key
21	Retainer screw	188	Drive shaft spring	232	Pre-program keypin
22	Button basement	189	Friction washer	233	Eccentric
23	Pushbuttonspring	190	Drive shaft screw	234	Pre-program plate washer
24	Push slice	191	Stopping bracket screw	235	Dial washer
25	Stopping slice	192	Stopping bracket	236	Dragcontrol lever thrust ring
26	Fixednail	193	Stoppinglockspring	237	Drag control lever
39	Crosspin fixed screw	194	Anti reverse dog	238	Drag control lever washer(B)
40	Alarm lever	195	Plate support	239	"E" washer
42	Spacer	197	Left side plate	240	Dragcontrol lever thrust ring
43	Crosspin support	198	Anti-reverse ratchet	241	Leverhub cover
47	Alarm lever screw	199	Ball bearing	242	Fixedplatescrew
81	Spool nail	200	Rubber ring	243	Sound silce
159	Push button shaft	201	Harness lugs	244	Soundnail
160	"E" washer	202	Frame	245	Soundnailspring
161	Handle bolt	203	Reel foot	247	Wrench B
162	T handlenail	204	Reel foot screws	248	Fixed screw
163	Handle arm	208	Cooling shield	249	Fixed nuts
164	Drive shield	209	Pressure plate	250	Rod clamp
165	Thrust washer	210	Spool shaft	251	Fixed nuts
166	Alarm limited coat	211	Gear shaft pin	252	Drag tension knob
167	Alarm crosspin suffort	212	Spool shaft spring	253	Side plate screws
168	Right side cover	213	Drag washer	255	Alarm lever knob
169	Handle knob screw	215	Spool drag screw	256	Drag control lever cap
171	Limited nail	216	Spool washer	257	Drag control lever
172	Alarmsupport	217	Spool	258	Alarm lever slice
173	Alarm spring	218	Piston cover	259	Alarm lever cap
174	Alarmlevercrosspinsuffort	219	Piston big ring	260	Alarm lever knob
175	Alarm lever crosspin suffort	220	Piston small washer	286	Gear shaft pin
176	Alarm hammer	221	Piston button		
178	Drive shaft cover	222	Piston sealing washer		